

### SIREN BOX

- ✦ **Material:** Metal Casing
- ✦ **Colour:** White
- ✦ **Dimension:** 195mm (W) x 225mm (H) x 140mm (L)
- ✦ **Weight:** 1.5kg



### ELECTRONIC SIREN

**MODEL:** ES-626

- ✦ **Rated voltage:** 6- 12V
- ✦ **Output level:** 115dB (option: 120dB)
- ✦ **Material:** ABS Resin
- ✦ **Dim:** 100mm (Dia) x 105mm (L)
- ✦ **Appearance & Color:** 4" Trumpet High Temperature Plastic Housing, Black



### STROBE LIGHT

**MODEL:** SL-79

- ✦ **Operation Voltage:** 150mA / 12VDC
- ✦ **Flash rate:** 90 times / min
- ✦ **Colour of Lamp Cover:** Red /Blue
- ✦ **Operation Life >** 200 Hour
- ✦ **Candle Power** 70,000
- ✦ **Measurement:** 43(H) x 72 (D) mm



### INTERNAL SIREN

- ✦ **Material:** Plastic ABS
- ✦ **Rated voltage:** 12V DC
- ✦ **Current drain:** 600mA
- ✦ **Output level:** 105dB



### Emergency Push button

**MODEL:** EB-65

- ✦ **N.C., & N.O. Alarm Circuit Connection Possible**
- ✦ **Contact Rating:** 0.5A at 240V DC max
- ✦ **Colour:** White
- ✦ **Dimension:** 76mm (L) x 23mm (W) x 15mm (H)



# Your Security Our Priority

### EMERGENCY BREAK GLASS

Model: D-118

- ✦ Size: 88mm x 88mm x 55mm
- ✦ Current ratings: 12/24V DC 10A; 48V DC 3A; 250V AC 10A
- ✦ Net/Gross Weight : 150/176g
- ✦ Connections: TERMINAL-MAX 2.5mm<sup>2</sup> Cable
- ✦ Casing colour: Green



### PANIC BUTTON

Model : PB-68

- ✦ Microswitch Operation
- ✦ Knob (Button) are resetable with key
- ✦ N.O and N.C contact
- ✦ Dimension: 55 x 55 x 27mm



### ON OFF KEY SWITCH

Model: KS-28

- ✦ Standard single gang mounting box with built in tamper switch
- ✦ Rated: 3 Amp at 12VDC
- ✦ Stainless steel face board
- ✦ LED Indicator
- ✦ Size: 85L x 85W x 34.5H (mm)
- ✦ N.O. or N.C.



### MAGNETIC REED CONTACT

MODEL: RC-33

- ✦ Perfect for all small application
- ✦ Screw mount / self adhesive
- ✦ Reed switch contact
- ✦ Gap distance are over 18mm
- ✦ Normally Close Contact



# Your Security Our Priority

**MAGNETIC REED CONTACT**

**MODEL: MC-31**

- ✦ Supplied with spacer & cover as standard
- ✦ Reed switch contact
- ✦ Gap distance are over 16mm
- ✦ Normally Close Contact



**MAGNETIC REED CONTACT**

**MODEL: MC-38 (White or Brown)**

- ✦ Perfect for all small application
- ✦ Screw mount / self adhesive
- ✦ Reed switch contact
- ✦ Gap distance are over 18mm
- ✦ Normally Close Contact



**MAGNETIC REED CONTACTS**

**MODEL: MC-51**

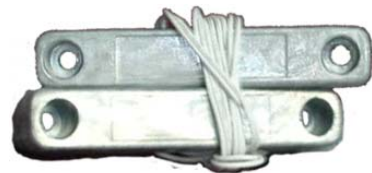
- ✦ With cover keeps mounting
- ✦ Screw & terminal screw hidden
- ✦ Reed switch contact
- ✦ Gap distance are over 16mm
- ✦ Normally Close



**STEEL DOOR CONTACT**

**MODEL: MC-58**

- ✦ Aluminum Case
- ✦ 18" 22 AWG Lead Wire
- ✦ Distance are over 40mm
- ✦ N.C.
- ✦ Heavy duty type



**OVERHEAD DOOR CONTACT**

**MODEL: OC-55**

- ✦ Aluminum Case
- ✦ Armored Cored (18")
- ✦ Distance are over 75mm
- ✦ N.C.



**Your Security Our Priority**

### MAGNETIC SHUTTER SENSOR

**MODEL: OC-56**

- ✦ **Material: ABS**
- ✦ **Distance are over 75mm**
- ✦ **N.C.**
- ✦ **Size: 80W x 128H x 32L (mm)**
- ✦ **Adjustable for up/down and left/right**



### Adjustable Vibration Sensor

**MODEL: M5**

- ✦ **Sensitivity Adjustable in High, Medium and Low mode**
- ✦ **Material: Plastic cover with gold plate roll inside**



### Money Clip

**MODEL: MH-60**

- ✦ **SPDT contact**
- ✦ **Fits standard cash, Register Drawer**
- ✦ **N.C.**



### PIR Motion Sensor

**Model:**

- ✦ **Relay contact: Normally close**
- ✦ **Sensing range: 10meter**
- ✦ **Sensitivity: Adjustable**
- ✦ **Power: DC 12V**



### Smoke Detector

**Model: ESD-03-12V**

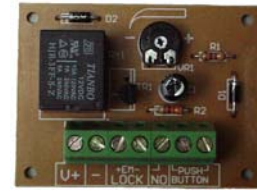
- ✦ **Relay contact: Normally close**
- ✦ **Dimension: 100mm (D) x 48mm (H)**
- ✦ **Power: DC~15V from security/Burglar alarm system**



### Timer Relay

**Model: Timer Relay**

- ✦ **Relay contact output: N.C. & N.O.**
- ✦ **Push Button Input: N.O. input**
- ✦ **Power: 12VDC**
- ✦ **Timer: Adjustable for up to 20 sec.**



### Tamper Switch

**TN.C. Contact when depressed**

**Function: Protects Alarm Control Panel Box or Siren Box**

**Easy Mounting Bracket, No Tool is Required**

**Measurement: High--73mm, Inner Diameter -- 19mm,  
Outer Diameter -- 24mm**